



# Longview Community Church

2323 Washington Way

Longview, WA 98632

360-423-6380

# MARCH 2021

## Inside This Issue:

Pastor's Perspective	1
Deacon Ministry	2
Youth/Kids	3
Sylvan Lodge Remodel	4
This and That	5
Calendar	6

## Pastor's Perspective

By Dave Hendrickson, Lead Pastor

### “Re...”

What is “re”? Well, according to the dictionary, it is a noun. “Re: the second note in the major scale in solfege.” It’s also a preposition. “Re: in the matter of, about, or concerning (typically found in the heading of official documents)”. “Re” can be found on the periodic table identifying the atomic element #75, Rhenium. Finally, “re” can be used as a prefix describing something as “afresh, or anew”.

I predict that over the coming weeks and months, we will begin to see a lot more of these two little letters. Why? As the weather changes, people are vaccinated, and guidelines are loosened many businesses, organizations, and society will want to re-engage, re-open, re-establish, and re-new to what we once knew before the world-wide pandemic.

### Will we go back to normal?

As much as we would all like to re-wind time and re-turn to normal as we knew it, the things society and culture have experienced over the past year have changed us. The way in which we shop, travel, communicate, and socialize will all look different. The question we must ask ourselves is, “How will I choose to re-act to the change?” With re-sistence or re-ception?

### Church Re-Launched!

I am excited to announce and share with you, that beginning on Sunday, April 4<sup>th</sup>, LvCC will re-launch a weekly in-person worship service, while adhering to guidelines! The service will begin at 9:30am and will also be streamed to the LvCC YouTube channel. I look forward to being able to gather weekly in-person as a united family. I realize there will be some who might not feel comfortable or have not received their vaccination by this time. I would encourage you to make the healthy decision for you and come when you feel comfortable!

What will the re-launch look like? It will be multi-generational, bringing long-standing members together with the new faces, families, and visitors. It will give an opportunity to participate. The church was not established to be a place to “consume” worship, it is the place for us to participate in worship! We will have opportunity to participate through singing, praying, sharing our testimony, and much more! It will be a place for discipleship. We will fellowship, pray, encourage, and speak into one another’s lives.

If much of what you have read sounds like what we have done before, it is. The effectiveness of the “re-launch” is how we choose to re-act to the change. My prayer is that we experience the real presence of our heavenly Father, the love of Jesus our Savior, and the power of the Holy Spirit in the “re-launch” of LvCC!

As Paul says in Philippians 3 (The Message)...

*I gave up all that inferior stuff so I could know Christ personally, experience his resurrection power, be a partner in his suffering, and go all the way with him to death itself. If there was any way to get in on the resurrection from the dead, I wanted to do it. I'm not saying that I have this all together, that I have it made. But I am well on my way, reaching out for Christ, who has so wondrously reached out for me. Friends, don't get me wrong: By no means do I count myself an expert in all of this, but I've got my eye on the goal, where God is beckoning us onward—to Jesus. I'm off and running, and I'm not turning back. So let's keep focused on that goal, those of us who want everything God has for us.*

Longview Community Church  
**Community Matters**

# Elder Meeting Highlights

At the Elders' Vision meeting on Feb. 2, the Elders continued discussing potential ideas for 2021.

During the Feb. 16 Business meeting, Treasurer Randy Sundberg explained that, although the financials show an excess of Net Income for the month, that is due to the annual Trustees contribution and payroll being down from what was budgeted. It was announced that the SWWA strings will be using our facility in late February and early March for rehearsals and they hope to be able to offer, depending on COVID-19 restrictions in place at the time, either an in-person or virtual concert March 19 and/or 20. Janet Freece informed the group that the Memorials committee oversees the Memorial and Hoffman Scholarships and that application forms will be made available on the church website and in the church office for interested high school seniors. Randy reported that he found out that LvCC is not on the local historical preservation registry; it is on the national registry, but that only dictates what can be done in terms of improvements if federal funds are used. The Elders also discussed options for continued in-person worship. ~ph



## Men Connect via Zoom

Some men from the former "Longview Donuts" men's fellowship group resumed meeting in February via Zoom, after several months of not meeting at all.

They enjoy being able to catch up with and see each other weekly! Several of our men's and women's groups have discovered the convenience of "attending" a group without leaving their home.

If you would like more information about getting connected with a group, please contact the Church Office.

## Deacons Bring Cheer!

Our Deacons team, under the leadership of Jaime and Diana Boaglio have been doing a great job of connecting with many of our members and friends who have been mostly stuck inside these past several months! They regularly check on and delivery M25:35 meals to several people, and recently they delivered bright and colorful primroses and the Daily Bread to over 50 people!

They also have provided "love food" to several who have been ill, had surgery or recently lost a loved one. If you, or someone you know, have a need please contact Jaime and Diana or call the Church Office so that we can let the Deacons know. And thank you, faithful Deacons, for demonstrating the love of Jesus to our church family!





## Youth: “Plugged In” *By Kyle Beasley, Interim Director of Youth*

Last month, we had a great time with illusionist Zak Mirzadeh and the band, The Morningtide. This month we are looking forward to our **Ski & Snowboard Day**. See details below.

### **ZOOM Youth Group—Wednesday, 7:00pm**

We are starting a new series called **Lost and Found**. Have you ever been lost? Maybe you wandered away from your parents, took a wrong turn, or lost track of your friends in a crowd? It can be scary to realize you’re not sure where you are or how to get home again, and the same thing is true when it comes to our faith. We were created to be close to the God who made and loves us. But some of us don’t know our Creator yet. And some of us know Jesus but we wander (or at least we feel) far away from Him. In this series, we’ll explore a series of stories Jesus once told about things that were lost and then got found again.

### **Youth Group LIVE—Sunday, 6:00pm-7:30pm**

We are meeting in person, but we still need to follow the COVID-19 guidelines—masks, social distancing, and frequent hand washing. Please do not come if you are symptomatic (fever, cough, chills).

We’ll be starting a new series called **Origin Story**. Whether the cause is a radioactive spider bite or a nuclear explosion, every superhero has an origin story — a moment when they begin to discover how they’re uniquely equipped to help save the world. Students probably don’t have the power of flight or the ability to shoot energy beams out of their fists, but in this series they’ll see that they have the potential to help save the world too.



### **Ski & Snowboard Day—Friday, March 12**

Youth and their families are invited to join us for a day of skiing and snowboarding at White Pass. This is a “snow make-up” day for Longview and Kelso school districts, so unless we get another big snow storm between now and then, it’s a free day. Families can go up for all or just part of the day. The youth group will be transporting students that just want to go for a half day. For more information, see Plugged In! News on our church Facebook page or contact Kyle Beasley at [beasleywa@gmail.com](mailto:beasleywa@gmail.com) or (360)430-9701.



# world changers

KIDS MINISTRY

*By Mary Gronseth, Interim Children’s Ministry Director*

February has been fun as we celebrated Valentine’s Day. Part of our children’s porch drop was Valentine stationary and an addressed envelope to one of our Senior Friends at church. The children wrote notes and sent them off. It has been so fun to hear from both receiver and sender as they enjoyed making and receiving their Valentines.



On a snowy day in February several families gathered on Zoom and baked a flour-less chocolate torte. Everyone had their ingredients gathered and measured. Chef Whitney Kabanuk led us through the process of mixing it together. We then played Valentine Bingo while they baked. Everyone had great reviews of the finished product! It was rich and melted in your mouth. There is now conversation about what the next Zoom baking project will be.



Children are learning about and spending time in prayer during Lent. They have a prayer journal that leads them through different types of prayer as we prepare for the death and resurrection of Jesus.

I feel so fortunate to get to know them and work with them. Thank you families for the joy you bring to me!



# HISTORY *By Lou Locke*

*Following is Lou Locke's summary of recent renovations to the church-owned property, Sylvan Lodge. This Missions project of the church houses developmentally disabled adults through a program that is overseen by Independent Living under the auspices of Life Works. Thanks to Lou and the other faithful members of LvCC who have worked at and supported this program through the years.*

Sylvan Lodge was donated to the church in 1982 by Dr. Robert Pulliam and his wife, Margaret. They asked that earnings from the apartments fund church missions.

The church converted the lodge's main building from studio apartments to 10 two-bedroom apartments that house disabled people. Life Works oversees their care and has an office in the building.

The Sylvan property included another building we call the annex, or Unit 14. It was a two-bedroom apartment, probably built in the 1950s, that was not remodeled initially. But a third bedroom was added when Stan Noteboom's family lived there. He managed the property for the church.

That brings us to 2019. After many years of discussion, we decided to remodel the kitchen and bathroom in the annex. The problem before the fall of 2018 was what to do with the two tenants, Floyd and Charles--move them temporarily or wait until they vacated.

Originally their caregiver said it wouldn't be possible to move them so the remodel was put on hold for a number of years. Then in 2018 Life Works and the caregiver said they could move Floyd and Charles to the Monticello Hotel during the remodel.

Now we had to find a contractor to do the work. We settled on Bryan Kingsbury. We liked work he did for one of our church members and he was willing to work with us. We met in November 2018 with Bryan and his son Collin to give us an estimate. The work would be done on a time and material basis.

We commissioned Collin to draw plans for the remodel and give an estimate with us owning the plans if we got someone else or backed away from the project. They thought they would be available in the March to April time-frame.

Charles and Floyd moved to the Monticello Hotel for the duration of the project. The original plan was to move the hot water heater from under the cupboard in the kitchen to the closet in the hallway. It was difficult to get the plumbing to that location and space was limited. We decided to put the hot water heater in the bathroom and replace the bathtub-shower with a shower stall.

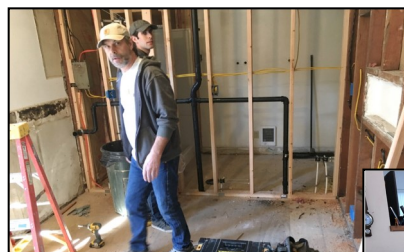
As we expected, the project found more problems than we anticipated. The subfloor and 2x6's had to be replaced. We replaced the appliances--stove, dishwasher and refrigerator.

Floyd and Charles moved back in on April 9, glad to be home. I believe the project was a success. The total cost was \$34,643.

Thanks to the other Sylvan Lodge committee members, Keith Larson, Dick Hagwell, and Bruce McCredie, for their help and support!



***Kitchen Before and After  
(with Floyd)***



***Bryan and Collin  
during remodel***



***Bathroom Before  
and After***

# This and That

## Scholarships Available

Applications are available in the Church office for several Longview Community Church scholarships for our Church's graduating seniors. The Francis and Helen Hoffman Memorial Scholarship and the Longview Community Church Memorial Scholarship are awarded annually to graduating seniors who have been active in the life of our Church. Each are financial assistance for additional education or training.



Every high school senior is strongly encouraged to apply using the single application form common to both scholarships. Two seniors will be selected from those applications. Consideration will be given to those who prepare the proper application and participate in the selection process. Applications are due in the Church office no later than April 30, 2021.

The Trustees Scholarship is available for undergraduates and graduates who want to educate themselves for Christian work. Applications are available online or in the Church Office and are due June 30, 2021.

**Online Worship** If you missed the notice, our Online Worship is now on YouTube, not on Facebook, at 9:30 a.m. Sundays. Please contact the Church Office during the week if you need assistance with being able to view the service. Worship also continues to be available to watch on KLTV on Wednesdays at Noon and Sundays at 3 pm.

### M25:35 Continues

Paul and team will continue serving lunches to go on Saturdays at noon through March 27. Be sure to stop by to pick up meals for yourself and your friends and neighbors!

### Medical Equipment Available

If you or someone you knows needs medical equipment, i.e. walker, wheelchair, commode, etc, please contact Roberta Baird at 360-636-3848.

**MARCH MISSIONS FOCUS:**  
**Love, Inc.**

## Dear Church Family...



I just wanted to thank everyone that has kept me in prayer over the last year. It has been quite a journey, but with all the prayers supporting me through losing Bud and some of my own health issues I have made it through. I know my loss will still be there and I accept that. I love all who have prayed for me and am by all means grateful.

There is another thank you that should be said also. A BIG thank you to those who came all the way out here to Cathlamet to help with things that I needed help on. It all has been very touching to know that we have a great church family.

~Cherie Behrens

We want to thank you for the beautiful blooming primrose that was delivered by a deacon. It was a great surprise that brightened our day. Being remembered by our church is special to us.

~Rex and Bill Jean Davis

Thank you for your kindness and generosity. The "two-toned" red primrose was gorgeous! You all have been so thoughtful with the poinsettia at Christmas, a Valentine from one of our youth, and now a spring primrose.

I'm pleased to report my broken arm and shoulder are healing well, and I'm learning to walk again with a walker. Thank you again for all your loving encouragement.

~Doris Disbrow

### January FISH Report

We served 115 orders-251 adults and 199 children.



Thank you to the wonderful workers-from tent set up and take down, bringing food to the Fellowship Hall, taking phone calls, filling the orders, taking orders to the parking lot and putting everything away on Friday!

Next FISH week is March 29-April 2.

### JANUARY FINANCIALS

YTD INCOME:	\$38,619
TRUSTEES VISION:	\$ 8,000
YTD EXPENSE:	\$43,459
DIFFERENCE:	\$ 3,220

# Longview Community Church

2323 Washington Way  
 Longview, WA 98632  
 360-423-6380  
[longviewcommunitychurch.org](http://longviewcommunitychurch.org)



# March 2021

\*\*\*For the most current information and updates, see the online calendar in the Calendar tab of our website\*\*\*  
 YT=YouTube Live, Zoom=online Zoom meeting; all other meetings are onsite except as noted

SUN	MON	TUE	WED	THU	FRI	SAT
	<b>1</b> 8:30a Daily Prayer-YT 6:30p SW Synph Reh 6:30p Young Adult Study 7p Wkly Word Women-YT	<b>2</b> 7a Men's Grp-Zoom 8:30a Daily Prayer-YT 1p Tuesday Sisters-offsite 8p MOPS Moms-Zoom 7p Elders Meeting	<b>3</b> No Daily Prayer No Staff Meeting 6:30p Missions Mtg-Chapel 7p Zoom Youth 7p Sm Grp Ldr Mtg-Zoom	<b>4</b> 7a Men's Grp-Zoom 8:30a Daily Prayer-YT 9a Youth Pastors Mtg-Yth 9:30a Comm Bible Study 2p Louise Ameth-Journey 4p Comm House -offsite 6:45p Soup Sisters-Zoom	<b>5</b> Elders/Staff Retreat 5p Outside Event	<b>6</b> Elders/Staff Retreat M25:35 9a Outside Event
<b>7</b> Communion Elders/Staff Retreat 9:30a Online Worship-YT 6p Youth LIVE	<b>8</b> 8:30a Daily Prayer-YT 6p Lay Counsel Super-Zoom 6:30p SW Synph Reh 6:30p Young Adult Study 6:30p Mon Women-Zoom 7p Wkly Word Women-YT	<b>9</b> 7a Men's Grp-Zoom 8:30a Daily Prayer-YT 11:30 KLMA Meeting 1p Tuesday Sisters-offsite 2p Womens Team-Zoom 7p Personnel Meeting 8p MOPS Steering-Zoom	<b>10</b> 8:30a Daily Prayer-YT 9:30a Staff Meeting 10a WF Board Mtg-Zoom 7p Zoom Youth	<b>11</b> 7a Men's Grp-Zoom 8:30a Daily Prayer-YT 9:30a Comm Bible Study 6:45p Soup Sisters-Zoom	<b>12</b>	<b>13</b> Youth Ski Trip M25:35
<b>14 Daylight Savings Begins</b> 9:30a In-person Worship 9:30a Online Worship-YT 6p Youth LIVE	<b>15</b> 8:30a Daily Prayer-YT 6:30p SW Synph Reh 6:30p Young Adult Study 7p Wkly Word Women-YT	<b>16</b> 7a Men's Grp-Zoom 8:30a Daily Prayer-YT 10a History Meeting 1p Tuesday Sisters-offsite 7p Elders Meeting 8p MOPS Moms-Zoom	<b>17</b> 8:30a Daily Prayer-YT 9:30a Staff Meeting 4:30p Deacons-Zoom 7p Zoom Youth	<b>18</b> 7a Men's Grp-Zoom 8:30a Daily Prayer-YT 9:30a Comm Bible Study 10:30a Comm Partners 4p Comm House 2-offsite 6:30p SW Synph Reh 6:30p Youth Pastors Mtg 6:45p Soup Sisters-Zoom	<b>19</b> SW Synph Concert-TBD	<b>20</b> Newsletter Due M25:35 SW Synph Concert TBD
<b>21</b> 9:30a Online Worship-YT 6p Youth LIVE	<b>22</b> 8:30a Daily Prayer-YT 12p Admin/Fin-Chapel 6p Lay Counsel Super-Zoom 6:30p Young Adult Study 6:30p Mon Women-Zoom 7p Wkly Word Women-YT	<b>23</b> 7a Men's Grp-Zoom 8:30a Daily Prayer-YT 1p Tuesday Sisters-offsite	<b>24</b> 8:30a Daily Prayer-YT 9:30a Staff Meeting 7p Zoom Youth	<b>25</b> 7a Men's Grp-Zoom 8:30a Daily Prayer-YT 9:30a Comm Bible Study 6:45p Soup Sisters-Zoom	<b>26</b>	<b>27</b> M25:35-Final
<b>28 PALM SUNDAY</b> 9:30a In-person Worship 9:30a Online Worship-YT 6p Youth LIVE	<b>29 FISH</b> 8:30a Daily Prayer-YT 6:30p Young Adult Study 7p Wkly Word Women-YT	<b>30 FISH</b> 7a Men's Grp-Zoom 8:30a Daily Prayer-YT 1p Tuesday Sisters-offsite	<b>31 FISH</b> 8:30a Daily Prayer-YT 9:30a Staff Meeting 7p Zoom Youth			