



Longview Community Church

2323 Washington Way
Longview, WA 98632
Phone: 360-423-6380
Web site: www.longviewcommunitychurch.org

Believe....Grow....Serve

*Non-Profit Org.
U.S. Postage Paid
Permit #66
Longview, WA 98632*



Longview Community Church

**2323 Washington Way
Longview, WA 98632
360-423-6380**

longviewcommunitychurch.org

Volume 5, Issue 1
January, 2010



Find us on
Facebook

Our Mission Statement:

Longview Community Church is a body of believers, united in their claim of Jesus Christ as Lord and Savior.

Through fellowship, study, worship, and prayer, we prepare ourselves to go forth to serve and glorify God within our community and throughout the world by words of witness and acts of loving service to others.

Join us for Worship!

Regular Sunday Schedule

8:45 a.m.— Contemporary Worship
10:00 a.m.— Sunday School
11:00 a.m.—Traditional Worship

COUPLES' RETREAT:

Cannon Beach, Jan. 29-31, 2010

Same great location. Same fun and fellowship.
New, lower prices.

Prices range from \$100-\$290 for the weekend, depending on room selection, with first-timers and child care discounts. Visit the narthex before or after each Sunday service, and register between January 3 and 24. Contact the church office, if questions.



Inside this issue:

Women's Fellowship	2
History: Reflections	3
Board Highlights	4
January Calendar	6
Save your Rummage	8
Year-End Donations	10

...And MORE!

LONGVIEW COMMUNITY CHURCH
Community Matters

Where do we Begin?

Dear Family,
A pastoral colleague of mine startled me with some thoughts not long ago. Sharing some casual time over a cup of coffee at Starbucks he said, "It dawns on me that Church really begins at the benediction."

The church *begins* at the benediction? I let that roll around in my mind for a few minutes. What do you think about that idea? Crazy as that sounds, that is essentially the driving concept at Community Church these days. It's what I've been talking about the last couple of years, the vision that we at Community Church could begin to think and act "missionally." I've read some church statistics and studies that show that we Christians spend, on average, about five percent of our waking hours in church and involvement with church-related activities. The remaining 95 percent of our lives "begins at the benediction" and is spent at home, work, school and in the community. Some might argue that we need to increase the church's slice of the pie to more than five percent. I disagree. In fact, I believe the opposite is true.

When you think about it, this "95 percent" represents

an amazing opportunity for us. So "What is my (your) '95'?" Where are the places God regularly sends us to represent Him? What is the theology of our profession, our scholastic pursuits or our on-going efforts to raise children in a loving, nurturing environment? With whom are we engaged on a weekly or daily basis that we could have meaningful discussions about a life-enriching relationship with Christ?

Much like the metaphor of the church as an aircraft carrier, LCC wants members to come aboard each week for training, to be equipped with biblical knowledge and deep passions and energized, so that when we walk out the doors and into our 95-percent lives, we will be ready for our mission to the world.

As we step into 2010 with our new Associate Pastor Phil on board, as we take a very serious look at the results of the Facilities Committee report and the future of our Facilities Master Plan, we need to take on new challenges and ask God to provide us with the resources and confidence we need to be "energized leaders" in our own lives.

When I think of all the places and people we engage with each week, it truly boggles my mind. The powerful ways the Holy Spirit can influence others through us are beyond our comprehension. I don't want to miss any more opportunities to love, touch and serve the people around me. I firmly believe God is calling us today to join His mission—the greatest of all callings.

Please join me with excitement as we step into this next season of our life together, and begin to consider the areas in your life where God can use you to make a positive and lasting difference. Remember: church *begins* at the benediction!

Your Pastor,
John

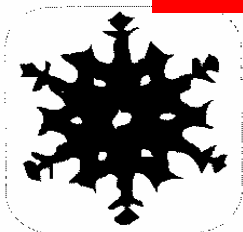
**Note:
Combined
Worship Service
Sunday, Jan. 3
10:00 a.m.**



Women's Fellowship

January, 2010

Alison McClelland, publicity
577-8171 or jmccl@kalama.com



Women's Fellowship Gives Thanks

Women's Fellowship would like to extend a sincere thank you to all of our church family and friends who so generously supported this year's pancake breakfast, bake sale and raffle. Whether you baked, ate or bought, you helped us raise close to \$1700. It will be used for fellowship, spiritual growth and service to our wonderful Longview Community Church in 2010. All of you, men and women, who donated skills, talents and time to this annual event are so appreciated. A real demonstration of what treasures you are.

The raffle winners were Esther Grant, Jane Hagwell, Roy King, Jeff Inman and Bob Powell. Congratulations to all of you. Also, thanks to everyone who bought raffle tickets.

Meet Phil and Julie Rushton

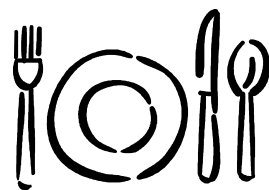
Sorry about all the erroneous information in regard to the spring event featuring our new associate pastor, Phil Rushton and his wife, Julie. The hurdle has been that they have to attend to their jobs up north during the week and are only available on weekends, but we believe we finally have it nailed down. We will have a luncheon on Saturday January 16 at 12:00, hosted by Lydia Circle. All church women are invited to this great opportunity to get acquainted with Phil and Julie. The menu was not available at press time, but knowing Lydia circle's reputation, you can be sure it will be mouthwatering. Be sure to join us.

February 2010 Luncheon

While you have your calendar out, please remember to mark down Wednesday, February 10, 2010 for the February luncheon. Louise Arnett is the host and they are planning a "Crafts and Collectibles" theme. Be thinking about an interesting collection that you have which you would like to display and/or tell about. It sounds like a lot of fun to learn things about your friends that you wouldn't otherwise get to know. So, come on...amaze your friends.

Women's Fellowship Luncheon

Sponsored by
Lydia Circle



Saturday, January 16, Noon
Fellowship Hall

January Board Meeting

The first Women's Fellowship board meeting for 2010 will be held on Wednesday, January 13, at 10:00 in the upper chapel. Be sure to send someone from your circle as we have many items on our 2010 agenda to decide upon.

Joining In

If you are interested in becoming active in Women's Fellowship and/or joining a circle, now is a perfect time to do it. Talk to President Sharon Kuroda or any one of the women who help with coffee ministry. You will get the details you need. And, WELCOME!

Coffee Ministry For Early Spring

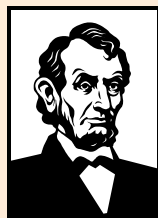
Mary Martha did a super job taking care of coffee ministry during the Christmas holiday and all of December. Thanks, ladies. In January, Lydia Circle will take over. During February, it will be up to Louise Arnett circle. Remember, if you are bringing cookies, make it 4 to 5 dozen, homemade if you can. We also welcome donations of coffee, both kinds, apple juice and store bought cookies and snacks. We have more folks than ever coming down to coffee time.

Got Crafts? Got Collectables?

Looking ahead to the February 10 Women's Fellowship Lunch—we want your help with a multi-focus: Abraham Lincoln's Birthday Bash and CRAFTS and COLLECTIBLES.

We want to see your hidden craft talent and the surprising collections in our midst. Could you plan to bring some samples to display? We would like to know about your talent or collection.

Please call Dolphine Mack (425-6704) or Betty Anderson (425-6761).



Bringing Our Best: Lessons from Nehemiah – and Goodwill



I don't often buy my shoes at Goodwill, but on this occasion I was desperate. It was the Sunday evening before the first day of Vacation Bible School. On Monday morning I would make my stage debut as "Farmer John" in front of nearly 200 spectators who are typically entertained by the Disney channel.

The pressure was on! Suddenly it dawned on me that I was about to be "Farmer John" – and I didn't have a pair of boots. The character simply could not be done in blue jeans and a pair of Nike running shoes. What's more, I knew that once my days as "Farmer John" were over, it would be a very long time before I needed a pair of boots again.

Thus my trip to the Goodwill store. I was searching for a pair of boots. And they needed to be cheap and in good shape. As someone shopping in Goodwill, my expectations were rather high. I knew that whatever I found there would be "previously owned." But I didn't want my boots to look that way. I didn't want to see evidence of someone else's sweaty feet inside the boots. Amazingly, I actually found what I was searching for. Very clean, well broken-in boots for about \$10. They were a little big, but a pair of thick socks would take care of that.

My transformation was complete. With those boots I would truly become "Farmer John." Since that time I've not been back to Goodwill to purchase anything. I have, however, made several trips to Goodwill to donate items. When you shop at Goodwill you walk through the front door. When you donate, you pull up around back. I hate to admit it, but

my front door standards at Goodwill were much higher than my back door standards. When I was there looking for something for myself I was picky, demanding, even a little snooty about the whole thing. When I was there to give something that might go to others I was careless. I was, quite frankly, getting rid of junk from my house. My standards were very high about what I would get. The bar was lowered significantly when I gave. When I gave I was thinking about convenience; I was giving what I no longer needed or wanted. I wasn't bringing my best.

I hate to admit it, but my front door standards at Goodwill were much higher than my back door standards.

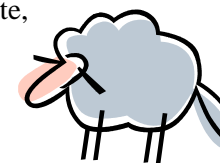
In biblical language, bring the best and giving it to God is captured by various uses of the word "first." God's people were to bring the first fruit of a crop they had grown. If making sacrifice, they would offer the first-born of the flock – the "pick of the litter."

When we read the words of the prophet Malachi, we're reading a rebuke aimed at those who kept the best at home and brought to God what was second-rate, defective, slightly used. Most of us don't grow crops and we don't herd sheep. So what does it mean for us to say "we will bring our best?"

One answer might simply be that our giving to God and God's work should not be motivated by convenience (a tax write-off) or what we don't need (the left-over money after we've got what we want). This is true, but it's not complete.

We get a better answer from the book of Nehemiah. In Nehemiah 10, the people make a renewed commitment to God that includes a series of promises about giving. The substance of their gift is really not new – first born of the herd, first fruit of the crop. What I find helpful is the fact that they make these commitments after Ezra has read a lengthy passage from the scriptures. By lengthy, think "all day long" reading session. As the people hear this they are reminded of who they are. They are God's people. They belong to God. It is in the remembering of their true identity that they make their commitments about giving.

To bring our best is not mainly about giving our best "stuff." It is about giving our best "self." We all know that stewardship involves money. It means making a decision about our giving for the coming year. But at a deeper level, this is always a time to remember who we are. We are God's people. God calls us to be his presence in the city and in the world. Once we get clear about our identity, we'll understand what we need to do in our giving. When we know who we are, we will bring our best. -jfw



"I have somewhere met with the epitaph on a charitable man which has pleased me very much. I cannot recollect the words, but here is the sense of it: What I spent I lost; what I possessed is left to others; what I gave away remains with me."

-Joseph Addison, on Giving

THE STEWARD'S CORNER

By Bob Guide

In the past few months, I have been teaching a class on evangelism based on Bill Hybel's book, *Just Walk Across the Room*. I have also been serving on a Long-Range Facilities Planning Committee. These seemingly different activities have quickly intersected to the point that many of us have concluded that there is no need to consider changing or expanding our facilities unless we're willing to reach out to the community to bring new people into our fellowship. There is no greater form of stewardship than to commit our lives to bringing others to Christ. Who have you invited to join you in worship recently? Are you really so excited about your faith that you are willing to share your faith with someone who doesn't know Christ? We need to step out in faith in this effort to share the Good News.

We have the unfortunate tendency to concentrate on our own comfort in our worship and fellowship experiences. I urge each one of us to look beyond ourselves and focus on the needs of others who have not experienced the grace of God. Longview Community Church presents a wonderful opportunity to present such an experience. Please consider what you can do to attract young seekers to find Christ with us. Unless we do that, our fellowship and church will wither and die into irrelevance. None of us wants to see that happen.

Why sign the red Friendship Pad?

Signing the red Friendship pad will help the Outreach Committee to identify newcomers and help the congregation to recognize those who are visiting, so that we can give all visitors a warm welcome. Please fill out your name, address and phone number to encourage the visitors to do likewise. Our intention is to be able to recognize visitors, not to record member attendance. Be sure to greet and visit with all newcomers. Invite them to coffee hour or to a class. Thanks.

-Outreach Committee

Nov. 2009	A LOOK AT THE FINANCES			
	Budget	Actual	YTD Budget	YTD Actual
Member Contributions	47,318	54,421	520,497	487,227
Other* Ordinary Income	2,844	4,795	31,284	16,989
Trustees	833.33	0	9,167	10,000
Total Ordinary Income	50,162	59,216	551,781	514,217
Expenses	50,162	48,419	551,781	492,292
Net Ordinary Income (Deficit)		10,797	0	21,924
One Time Special Gifts (bequests, unexpected income)		0		37,719
Net income after special gift		10,797		59,643

* does not include one time special gifts

NOTICE: Year-End Charitable Donations

Donors must deliver or mail (and postmark) checks on or by December 31, in order to claim a charitable contribution deduction for 2009. Checks placed in the church offering during the first worship service in 2010, will not qualify for a charitable contribution deduction in 2009, even if the check is post-dated to 2009 or was actually written in 2009. However, checks that are written, mailed, and *postmarked* in 2009 will be deductible in 2009, even if a church does not receive them until 2010.

IMPORTANT NOTICE: To ensure the deductibility of your church contributions, do not file your 2009 income tax return until you have received a written acknowledgement of your contributions from the church. Some of your contributions may not be tax-deductible if you file your tax return before receiving a written acknowledgement of your contributions from the church.

Early Reflections

by Karen Pickett, History Committee Member

The beginning of a new year often brings time for reflection as well as time for planning. Our church is in the process of planning – and this may provide us a good time for reflection also.

In that spirit, I found an interesting transcription of an interview with LCC's first pastor, Dr. Ed Gebert, done in 1972 (in preparation for the church's 50th anniversary the following year). Dr. Gebert was pastor for 35 years and was responsible for the founding and early development of our church. I thought you might be interested in hearing some of his memories in his own words.

"I imagine the most note-worthy event in the new city of Longview was the beginning of the Monticello Hotel at a banquet where Mr. Long was the principal speaker, and he told a sizeable gathering what the company had in mind for this new community that they hoped would become a city. He told of the industries, of various things they had planned for the town and wanted it to be a very unique situation. Now those he said were Christians, so why don't we call it The Christian Church. Well, the Presbyterians, Baptist, Methodist and others, when they went out they said nothing doing. People belong to the Christian Church in Kansas City, the Disciples of Christ, and that's what he wants us to be and we won't have any of it. So for the next several weeks



Dr. Ed Gebert
1923-1958

they were kicking around a name for this new church. No matter what was suggested, it just didn't work out, so finally someone came up with the word "community." Very few knew what a community church was, but when it was explained to them it was very simple. And so that was incorporated finally and it became the Longview Community Church."

Dr. Gebert goes on to explain that the first services were held in a "flimsy building on Oregon Way... nothing but shiplap."



The building had a barber shop, billiard table and lounging room for the men who worked on the job and a social room for the community that was used for dances and other community functions. This became the home for the church until we moved to the YMCA, prior to the building of our current sanctuary in 1926.

However, the "feeling of jubilation" that Dr. Gebert felt at the dedication of the Sanctuary did not last long because "in 1929, the awful depression struck. Our bank was down and out. We had \$1,800 in that bank that we sent away in a day or two as payment on our obligation to the bank in the east. Everything was gone. So we struggled along to pay something and finally couldn't. We had a spell where we couldn't raise the interest. And we were threatened with foreclosure. Well, I don't know what happened but eventually we made the last payment and we were debt free. That was another happy day, believe me. Our people had been so faithful and wonderful."

In this interview Dr. Gebert reminisces about the choice of "debts" rather than "trespasses" in the Lord's Prayer, controversy over the type of baptism to be followed, and the frequency of Communion. He also talks about the early music program and Sunday School, as well as our activity in Christian Endeavor.

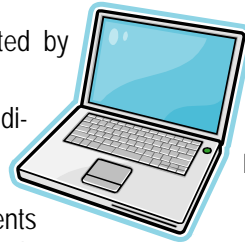
If you would like to learn more of Dr. Gebert's remarks, stop by the Museum to read the interview in its entirety.

Visit the Longview Community Church Museum, located just inside the back parking lot entrance, where the education wing meets the fellowship hall. The Museum is open following Sunday morning worship services, and on Tuesday mornings.

Board of Directors' Meeting Highlights

The Board of Directors met December 8, 2009. President Sean Kelly called the meeting to order at 7:09 p.m. and Pastor John opened with prayer.

- **MINUTES** of the November 10, 2009 Board of Directors meeting were approved as presented.
- **FINANCIAL REPORT**—Approved as presented by Treasurer, Randy Sundberg.
- **Master Plan** — Board members participated individually in a round-table feedback session regarding the Master Plan and what they like, dislike, or don't understand about it. Comments were recorded for further reference. Lengthy discussion and unanimous acceptance of a motion to accept the Master Plan in concept, as presented, with allowance for changes and modifications as we move into the future, seeking support of the congregation in its implementation. Topic will be revisited.



OLD BUSINESS

- **Budget**—Motion carried unanimously to approve the revised budget proposal as discussed in the last meeting and distributed with noted changes. Senior Pastor 2010 Salary Package was approved as presented.
- **Associate Pastor Update**—Phil and Julie Rushton will be here twice in December and in January. Shifting from the R-1 to a spousal visa.

NEW BUSINESS

- **Church Triumphant**—Bob Brasaemle's membership was formally transferred to the Church Triumphant.
- Attendees drew prayer cards.

Meeting was adjourned at 9:14 p.m. after a time of singing Christmas carols, led by Dennis Boaglio. *-kt*

Next Meeting:

Tuesday, January 12, 2009, 7:00 p.m.

CONNECTIONS

Connecting young families & anyone who wants to participate!

Consider starting the New Year off with a "Slow Down the Family" resolution. Here are some tips to free-up time for families:

- **Rethink the family calendar.** Rank priorities and find some activities to eliminate.
- **One structured activity per child.** Encourage a variety of activities, but not all at once.
- **"Schedule" your free time.** One of the best ways to ensure free time is to schedule it into the calendar like everything else.
- **Declare family hangout days.** Establish a traditional recurring family hangout day or half-day.
- **Go outside more often.** Make time for back-to-basics like puddle jumping and mud pies. Roaming outdoors fosters spontaneous play and creativity.

Clear out that crowded calendar!

If you have ideas for Connections events in 2010, contact Bruce or Michele Fischer at 425-4711, michelef@techline.com, or on Facebook!

Notes of Appreciation ...

Thank you for the prayers, cards, and phone calls after the death of my brother, Ken Williams. —Esther and Myron Grant



What an amazing pantry party! Thank you, everyone, for your kindness and generosity, and for rejoicing with me in my "new" home. God bless you. —Kay Tira

Dear Church Family, Thank you for the card, kind words, and generous gift. We felt loved!

—Dennis and Lisa Som

Thanks to **Clarence and Donna Blaine** for the sanctuary Christmas tree; to **Dave Grocott** for the use of his truck; to **Don Dalgarno** and **Bill Noteboom** for their help with delivering and setting-up the tree, and to **Max the dog** (and glove-snatcher), for all the extra "help" in the process. Thanks, too, to **Dennis and Sue Boaglio** and **Worship Team** for decorating the sanctuary Christmas tree.

Dear Friends, Thank You for all the prayers, notes, e-mails and good wishes sent our way as I fight Lymphoma. The first round of chemotherapy has gone well and I feel really good! My family, the church family and God's extended family has made a difference in this. We feel so blessed to have this support.

In His Love, Dan Gallagher

2009 Highlights

Major projects in 2009 included the Associate Pastor Search, Long-Range Planning and Master Plan Committees. Take a glance at some of the highlights of the year.

January 2009

11 Epiphany Luncheon and recognition of Harlan and Shirley Gilliland's years of service

23-25 Youth Snow Camp

30-31 Couples' Retreat

February

8 Veggie Tales' *Pirates* movie & pizza

13 Connections' Movie Night

14 Youth Valentine Dinner

27 "Fireproof" movie

March

4 Lil' KidMo begins (3 y.o.-K)

8 Associate Pastor Search Team formed

13 SAM, Gospel According to John

15 C.Ed. Appreciation Dinner

18 Community Life Talent Show

20 Youth Lock-In

April

5 Journey to the Cross

9 Prayer Vigil & Maundy Thursday

10 Community Good Friday service

21 55-Alive Driver Training

24 Women's Retreat

26 Hill Memorial Concert, PLU Chorale

May

6 Annual Congregational Meeting & Potluck

9 Men's Ministry Spring Clean-Up

17 Youth Chili Cook-Off

24 Al Runnells' 100th Birthday

27 Family BBQ

31 Music Sunday and Reception honoring Pastor Mary Ross's years of service and retirement

June

7 Senior Graduation Recognition

Choir Party at Dalgarno's

14 SAM Berry Patch & Ferry Ride

19 Youth Shark Tank Overnighter

21 Father's Day and VBS Rally Day

24-28 Vacation Bible School *SonRock*

July

Go Fourth!

Thursday Nights Out at Sundberg's

10-12 Connections' Family Camping

26 Combined Service with Phil Rushton, AP Candidate

Kids' Summer Wednesday Activities

August

16 Hicks' "Big Barn Bash"

September

6 '70's Youth Group Reunion

13 All-Church Picnic

24-27 MOPS Convention

October

5 '23 Club Dinner

10 Men's Rain-or-Shine Golf

18 Bill Harness Concert

25 All-Family Pumpkin Party

November

11 Free Simple Supper Burger Night

18 Thanksgiving Dinner

20 Samaritan's Purse Shoe Box Project

December

5 Christmas Starlight Parade

6 "Christmas Hang-Ups" Musical

12-13 Handel's MESSIAH

24 Christmas Eve Services (5,7,11 p.m.)

Senior Adult Ministries (S.A.M.)

Sign up with a S.A.M. representative during Coffee Hour

Contact the church office, if questions (423-6380).

- **Hymn Sing**, January 2, 6:00 p.m., Fireside Room
- **Epiphany Luncheon**, Sunday, January 10, 12:30 p.m., Sign up with a SAM rep; Cost is \$10. Menu: Judy's meatloaf, salad and dressing, peanut butter pie.
- **Pinochle**, January 29, 6:30 p.m., Lower Chapel
- **Evergreen Space Museum**, February 27, \$69, Discovery Tours (Meet at church at 9:30; church vans to Kelso mall)

FISH Report



November FISH

184 Families
373 Adults
288 children
The cost was \$3,192.29.

Year Ending 2009 (Six months 28 days)

1,251 Families
2,260 Adults
1,754 Children

Cost for local missions: \$17,606.79

Thank you for the many man-hours in support of this mission! -Robbin Elliott

For the Young and the Young at Heart

Snow Camp: Take Refuge

January 22nd—24th

Cost is \$65 plus ski package if...

student turns in their permission slip and \$40 nonrefundable deposit by December 31.

Cost is \$90 plus ski package if...

student turns in their permission slip and \$40 nonrefundable deposit after January 1.

Final Registration Date: January 13th



It is time to return to Camp Arrah Wanna. We will have a weekend of Worship, and a Guest Speaker talking about taking refuge in God. There will be laughter, skits, friends, snow, hot food, good memories and this year a Senior High only night hike! Don't miss out!

Church Rummage Sale



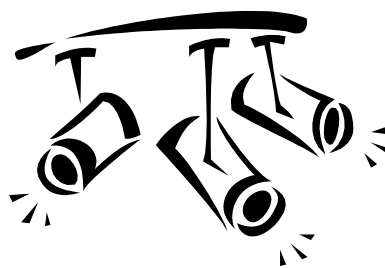
We will be having an all Church Rummage Sale in the month of April to help send our youth to Puerto Rico on a summer mission trip this summer. So start setting aside items to donate in April to the Rummage Sale and start praying for our students and our upcoming mission trip!

Valentine Dinner

A Night on the Town

Mark your calendar and make your Valentine plans with us! The youth will be putting on, once again an elaborate dinner on Valentines Day. The theme this year is the best of Broadway Plays! Every table will be themed differently representing a different Broadway Play. Plays will be featured such as, *The Phantom of the Opera*, *The Lion King*, *Grease*, *My Fair Lady*, *Oklahoma*, *Spamalot*, and many, many more!

Be sure you buy tickets for \$15 a plate. There will live entertainment by the Men's Castle Rock Ensemble singing, with piano accompaniment, your favorite Broadway tunes. The meal will be exquisite and an experience all its own. You will be waited on at your tables by Broadway Characters. The centerpieces from each table will be up for silent auction, so you could go home with the centerpiece representing your favorite Broadway Play. Childcare, dinner and entertainment will be available for free for parents attending the dinner. So plan for Valentine's day to have *A Night on the Town!*



For more information on Youth-related activities, contact Keri McHattie, 423-6380



CHILDREN'S MINISTRIES

By Lisa Som, Director

Thirty-seven children participated in the 2009 Children's Musical, "Christmas Hang-Ups" December 6. Sporting Christmas scarves and a variety of costumes, they told the story of Christmas from the perspective of ornaments, touching on themes such as loneliness, focus, the weather, and the celebration of Jesus' birth.

Soloists Ady Allen, Megan Meharg, and Michael Webster did a great job, along with both the "big" and "little" choirs.

It's always a treat to see children of Longview Community Church sing and act and present the gospel. This year's musical was especially well-received, and the children deserve a big pat on the back!

Thanks to each of you who lent your support in the form of costumes, coaching, construction, and cheering-on!

Children braved the cold temperatures to ride the float for the **Starlight Christmas parade** December 5. We had lots of great help building the float.

Vacation Bible School materials have arrived—so get ready to switch gears and watch for **SonQuest Rain Forest**, coming June 24-27, 2010.

KidMo! and **Lil' KidMo!** continue on Wednesday evenings at 6:30, following Simple Supper.

World Changers and Sunday school classes for all ages meet at 10:00 Sunday mornings. Join us for a great time together as we learn about our Lord!



Photos Courtesy Bob Gaston



Library Notes

Your 2009 Library Report

We have now reached Accession Number 6900. Each of these numbers represents a book processed for library usage, ever since the record has been kept in 1965.

Audio, visual and books on tape have reached the number 241 since 2006 records.

Some materials have been discarded, given to other libraries, or offered on our *free* shelf during those years.

Our children's readership has remained stable throughout the year and the adult readership has greatly increased. This increase is largely due to fictional material by Karen Kingsbury, Beverly Lewis, Gilbert Morris, Max Lucado and other fictional authors with strong, purposeful Christian writings. Family oriented books and those with parental and teaching helps have become very popular. "Just for fun" type reading is also high on the list. We remind all readers that our library contains serious study material for Christians at all levels of learning and strengthening faith. A few of our newer acquisitions include:

- *Some Folks Feel the Rain* by James W. Moore
- *Attitude is Your Paintbrush* by James W. Moore
- *The Quilter's Daughter* by Wanda E. Brunstetter
- *Evensong* by Gail Godwin
- *A Tendering in the Storm* by Jane Kirkpatrick

Our hope for 2010 is that you will familiarize yourself with our wonderful library and take advantage of the wealth of reading, viewing and listening available to you.

Remember: We're always open!

Happy New Year from your Library Crew:

Dee Dalgarno, Chairperson

Charlene Krause

Marian Martzall

Marion Metke

Phyllis Moore

Helen Nichols



Longview Community Church

2323 Washington Way
Longview, WA 98632
360-423-6380—Fax 360-577-8723
longviewcommunitychurch.org



Jan. 2010

Staff Members and E-mail Addresses:

John Williams, Senior Pastor jwsp@longviewcommunitychurch.org
Phil Rushton, Incoming Associate Pastor prap@longviewcommunitychurch.org
Lisa Som, Children's Ministries lske@longviewcommunitychurch.org
Keri McHattie, Youth/Family Ministries kmym@longviewcommunitychurch.org
Kay Tira, Administrative Assistant ktira@longviewcommunitychurch.org
Rosalie Gorley, Bookkeeper rgbk@longviewcommunitychurch.org

Sun	Mon	Tue	Wed	Thu	Fri	Sat
					1 CLOSED (Lock-In Ends)	2 6:30PM Hymn Sing, Fireside
3 7AM Men's Bkfst/Study 10:00AM Combined Worship; Communion 6:30-9PM FLAMES (Sr. Hi)	4 Noon—Pastor's Bible Study 2PM Ruth Circle, F/Hall 6:30PM Teen MOPS 6:30 PM Mary Martha, Chapel	5 7AM Men's study, Starbucks 9:30 a.m. S.A.M. Team 9:30AM Library/Museum 1:30PM Staff Meeting 5:30PM Bell Choir 7PM Deacons' Meeting	6 9AM MOPS 6PM Simple Supper 6:30 KidMo, C-4, WAVES 6:45 Adult Ed., Choir Practice	7 7AM Men, Starbucks 9:30AM Women's Bible Study	8 6AM Men's Bible Study Red Rooster Café	9
10 8:45AM Contemporary 10AM Christian Ed. Classes 11:00AM Traditional 12:30 S.A.M. Epiphany Lunch 6:30-9PM FLAMES (Sr. Hi)	11 Noon Pastor's Bible Study 6PM Lay Counseling 6:30PM Women's Retreat Meeting	12 7AM Men, Starbucks 9:00AM Work'n' Lunch 9:30AM Library/Museum 1:30PM Staff Meeting 5:30PM Bell Choir 7PM Board of Directors	13 9:15AM MOPS Steering 10AM WF Board Meeting 6PM Simple Supper 6:30 KidMo, C-4, WAVES 6:45 Adult Ed., Choir Practice	14 7AM Men, Starbucks 9:30AM Women's Bible Study	15 6:00AM Men's Bible Study Red Rooster Café	16 8-9:30 Men's Breakfast 9AM-2:30PM WSU Sewing Noon—WF Luncheon (Lydia), Fellowship Hall
17 7AM Men's Breakfast/Study 8:45AM Contemporary 10AM Christian Education 11:00AM Traditional 12:30 Soup Luncheon (Missions: Lynn Conner) 6:30-9PM FLAMES (Sr. Hi)	18 Noon Pastor's Bible Study 6:30PM Teen MOPS	19 7AM Men's study, Starbucks 9:30AM Library/Museum 1:30PM Staff Meeting 5:30PM Bell Choir	20 9AM MOPS 10 a.m. Lydia Circle Lunch Out 1:30 PM Somerset Visit 1:30PM Louise Arnett 6PM Simple Supper 6:30 KidMo, C-4, WAVES 6:45 Adult Ed., Choir Practice	21 7AM Men, Starbucks 9:30AM Women's Bible Study	22 Newsletter Deadline 6:00AM Men's Bible Study Youth Snow Camp 1p.m.	23 Youth Snow Camp
24 8:45AM Contemporary 10AM Christian Education 11:00AM Traditional Youth Snow Camp (no FLAMES)	25 Noon Pastor's Bible Study 6PM Lay Counseling	26 1:30 PM Staff Meeting 4:30PM Christian Education 5:30PM Bell Choir	27 Newsletter Folding Team 6PM Simple Supper 6:30 KidMo, C-4, WAVES 6:45 Adult Ed., Choir Practice	28 7AM Men, Starbucks 9:30AM Women's Study "Fingerprints of God" 4:30PM Trustees	29 Couples' Retreat 6:00AM Men's Bible Study	30 Couples' Retreat
31 8:45AM Contemporary 10AM Christian Education 11:00AM Traditional Couples' Retreat						